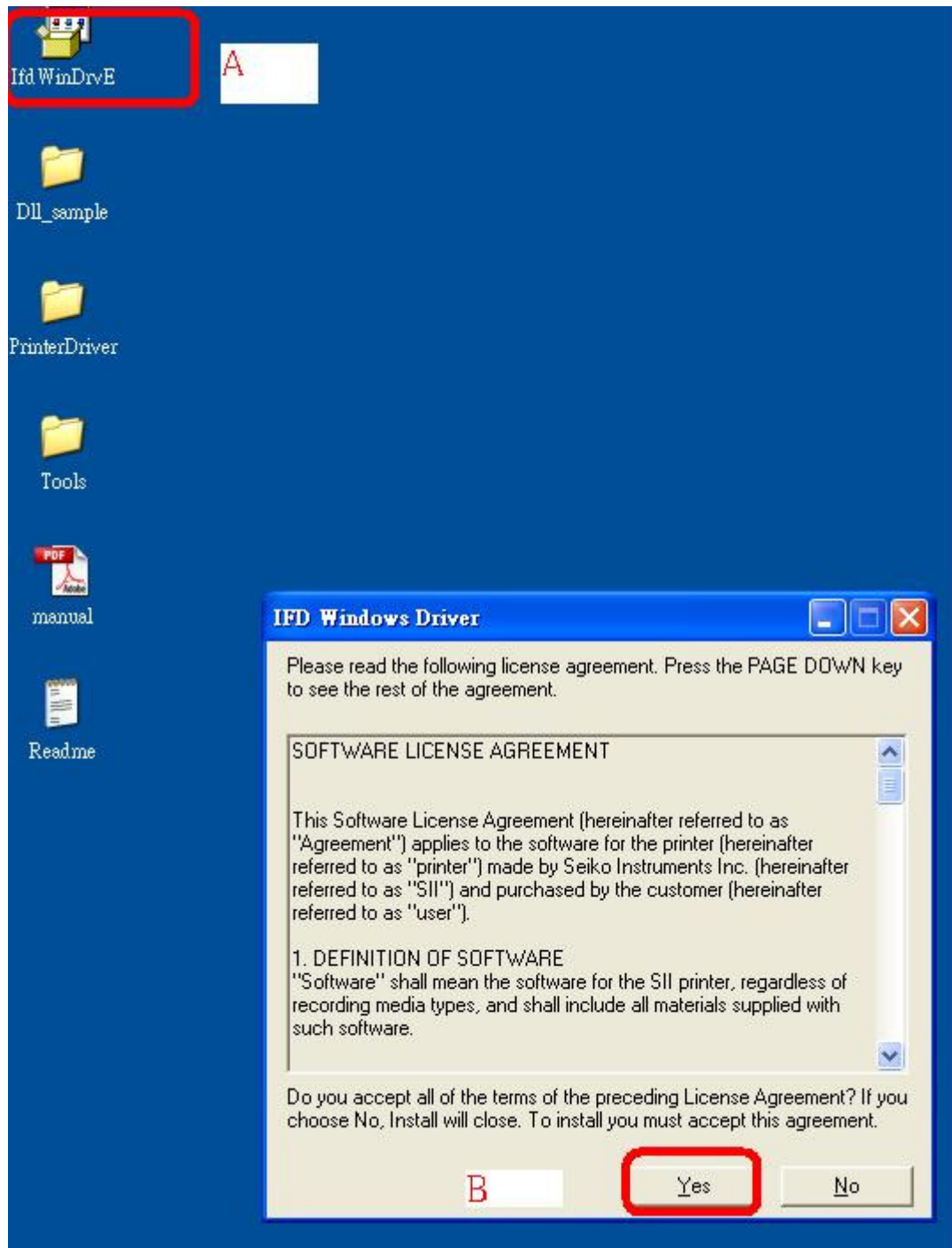


## How To Install PS3100 Printer Driver S.O.P (USB Interface)

Step1:

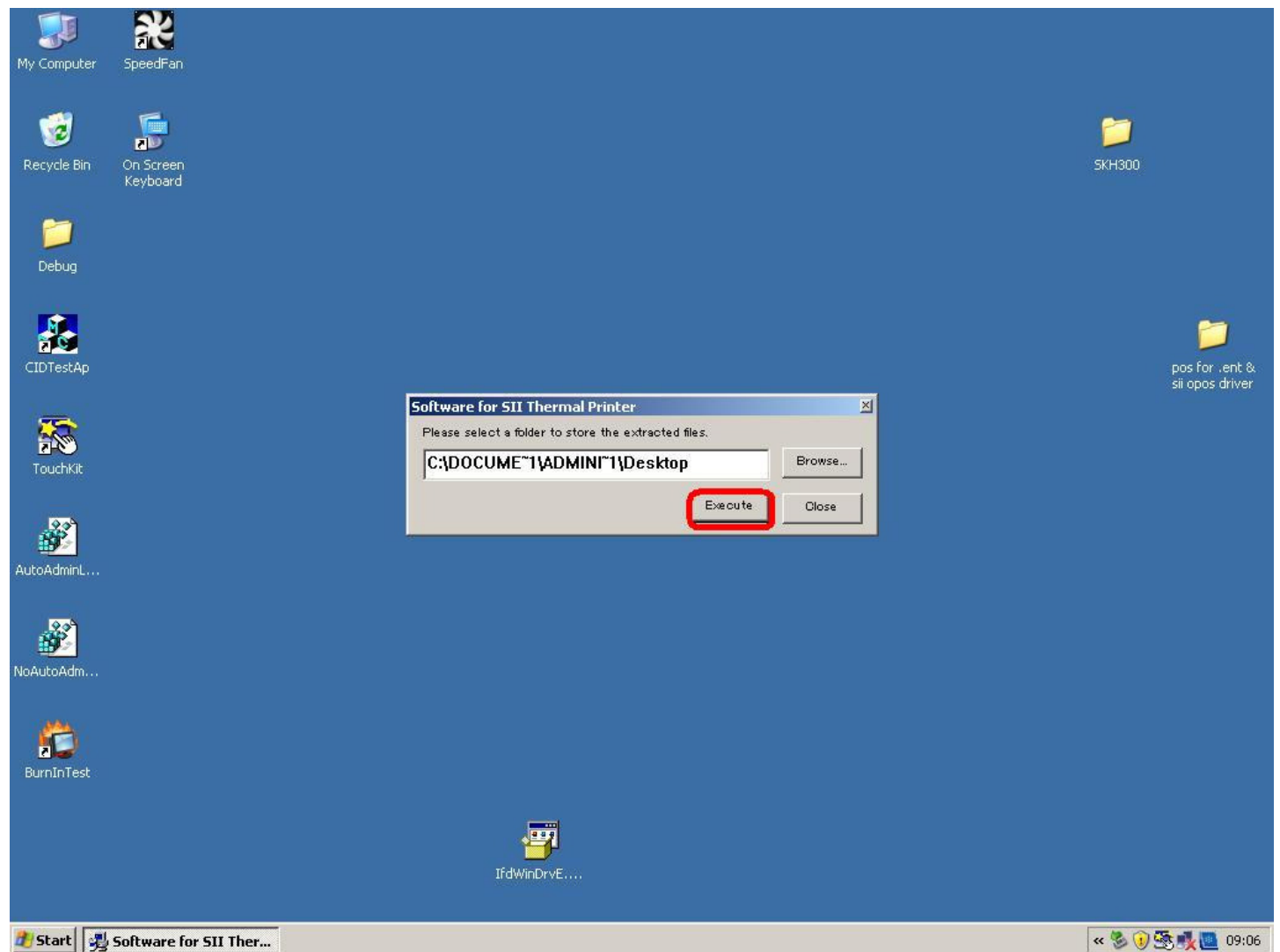
A: Please double click IfdWinDrvE AP.

B: Please click “Yes”



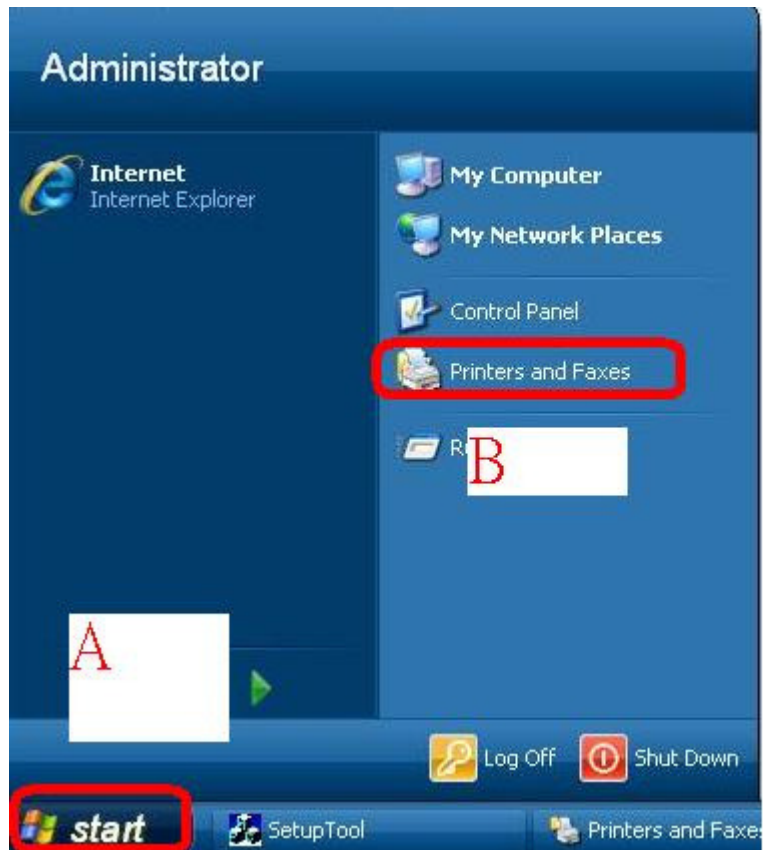
Step2:

Please click “Execute”

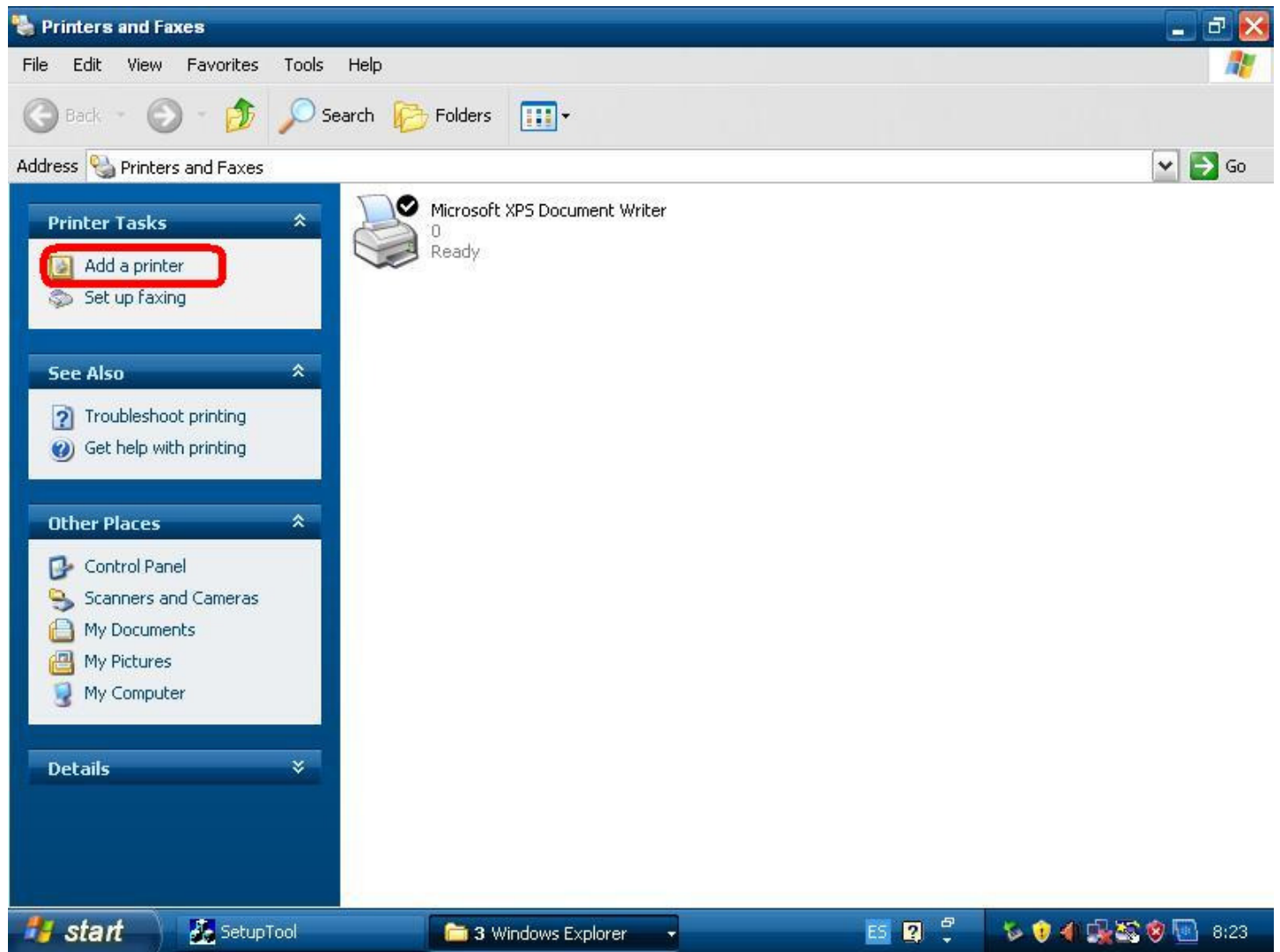


Step3:

Please click A: Start → B: Printers and Faxes

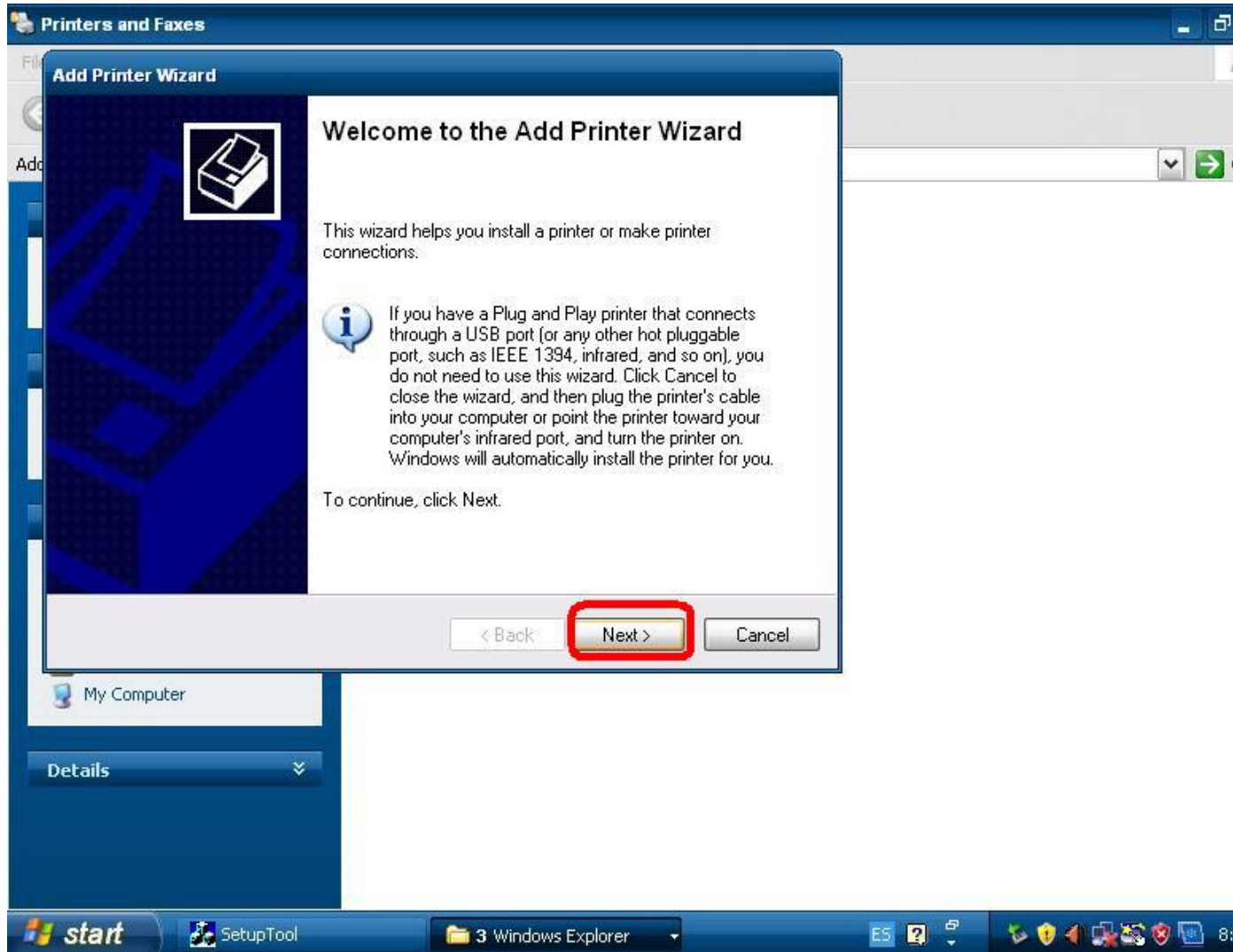


Step4: Please click “Add a printer”



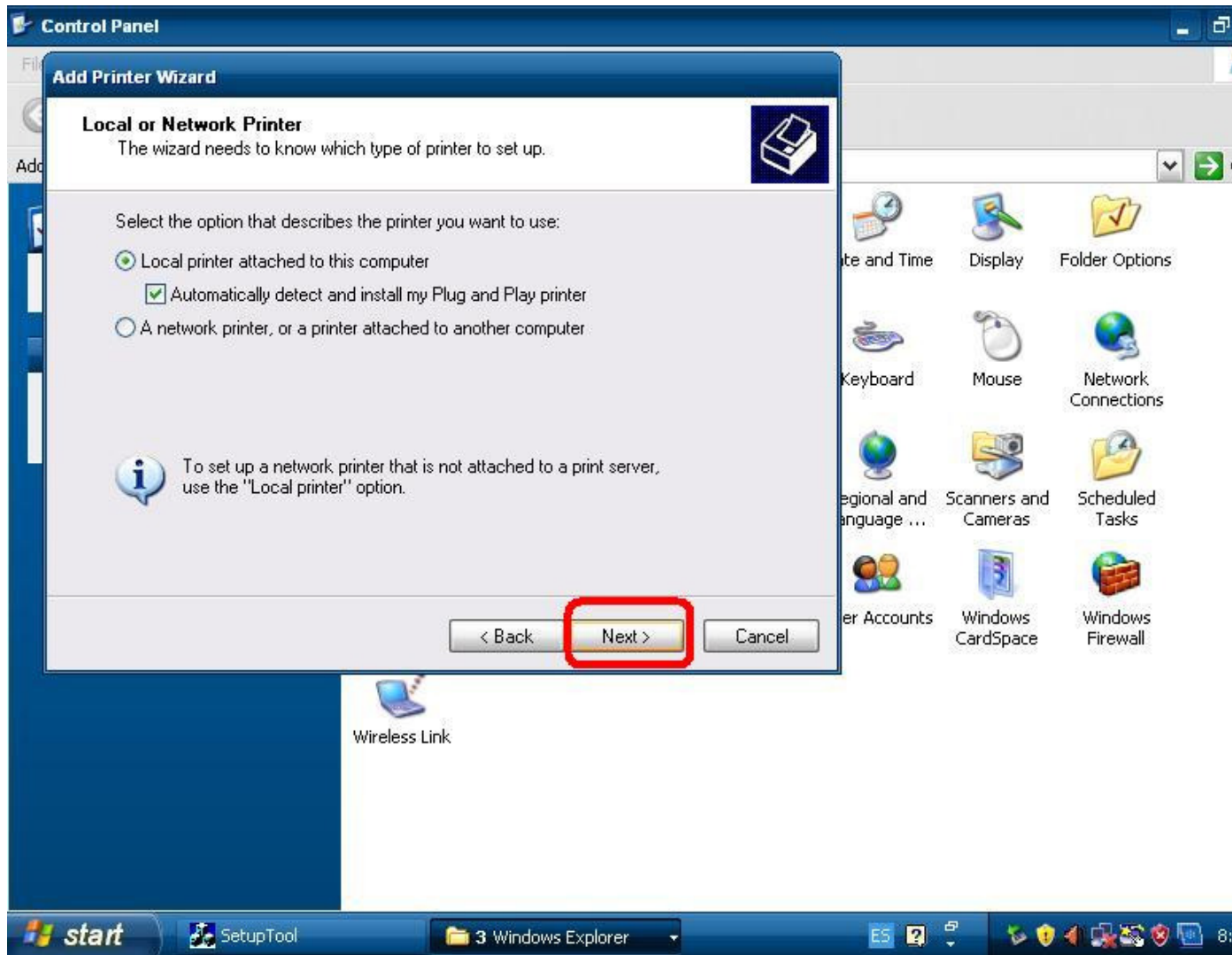
Step5:

Please click “Next”



Step6:

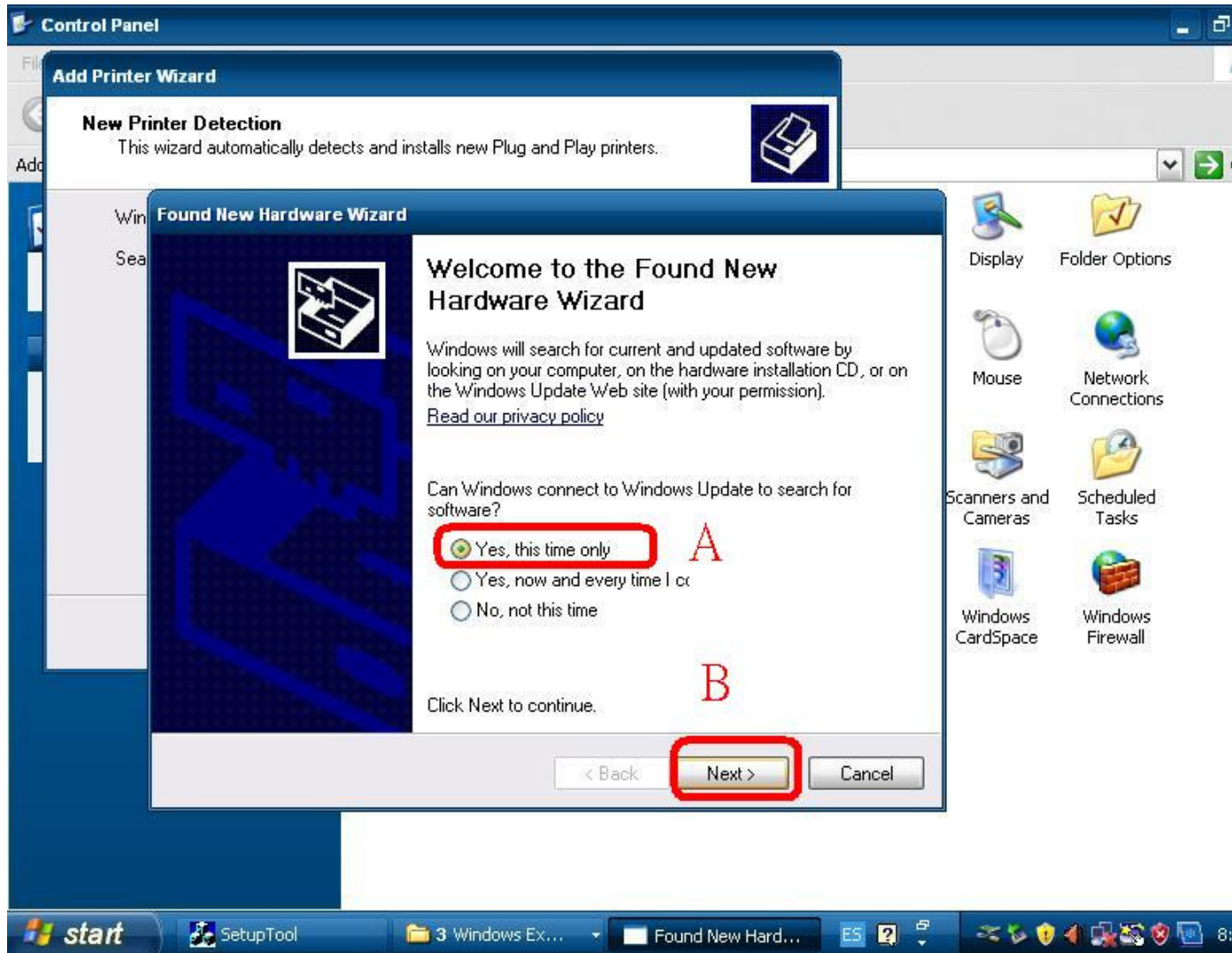
Please click "Next"



Step7:

A: Please select “Yes, this time only”

B: Please click “Next”

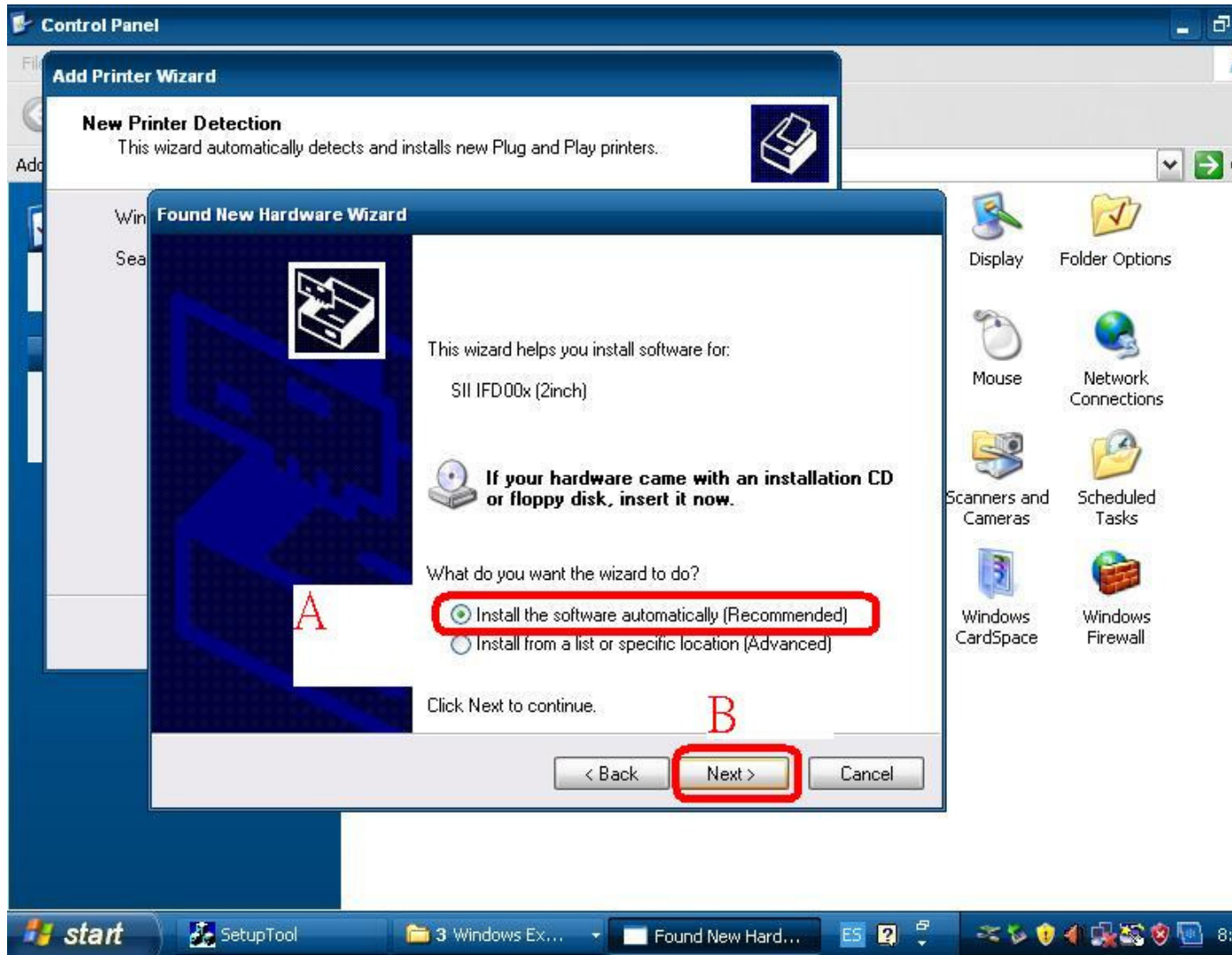




Step8:

A: Please select “Install the software automatically(Recommended)”

B: Please click Next

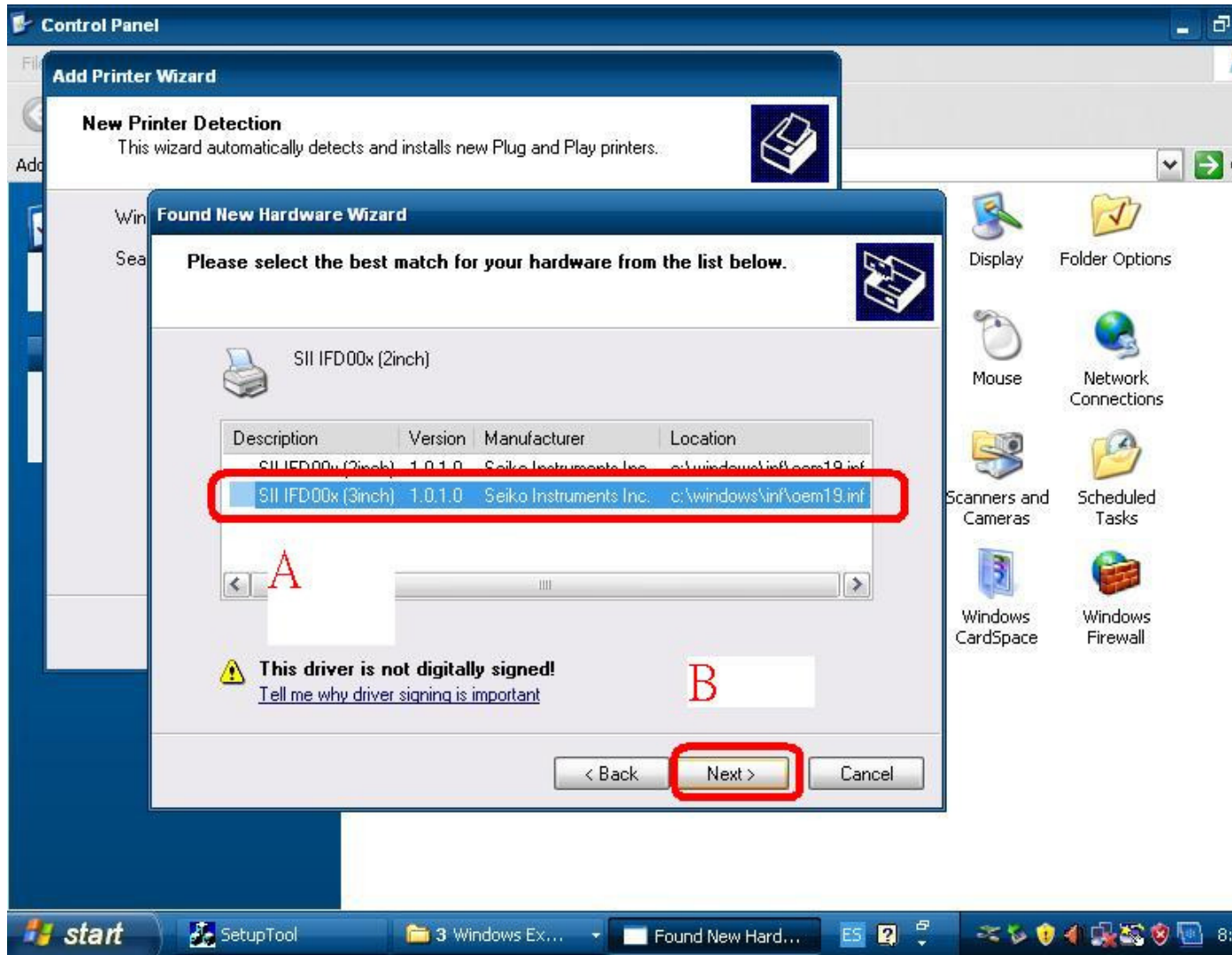




Step9:

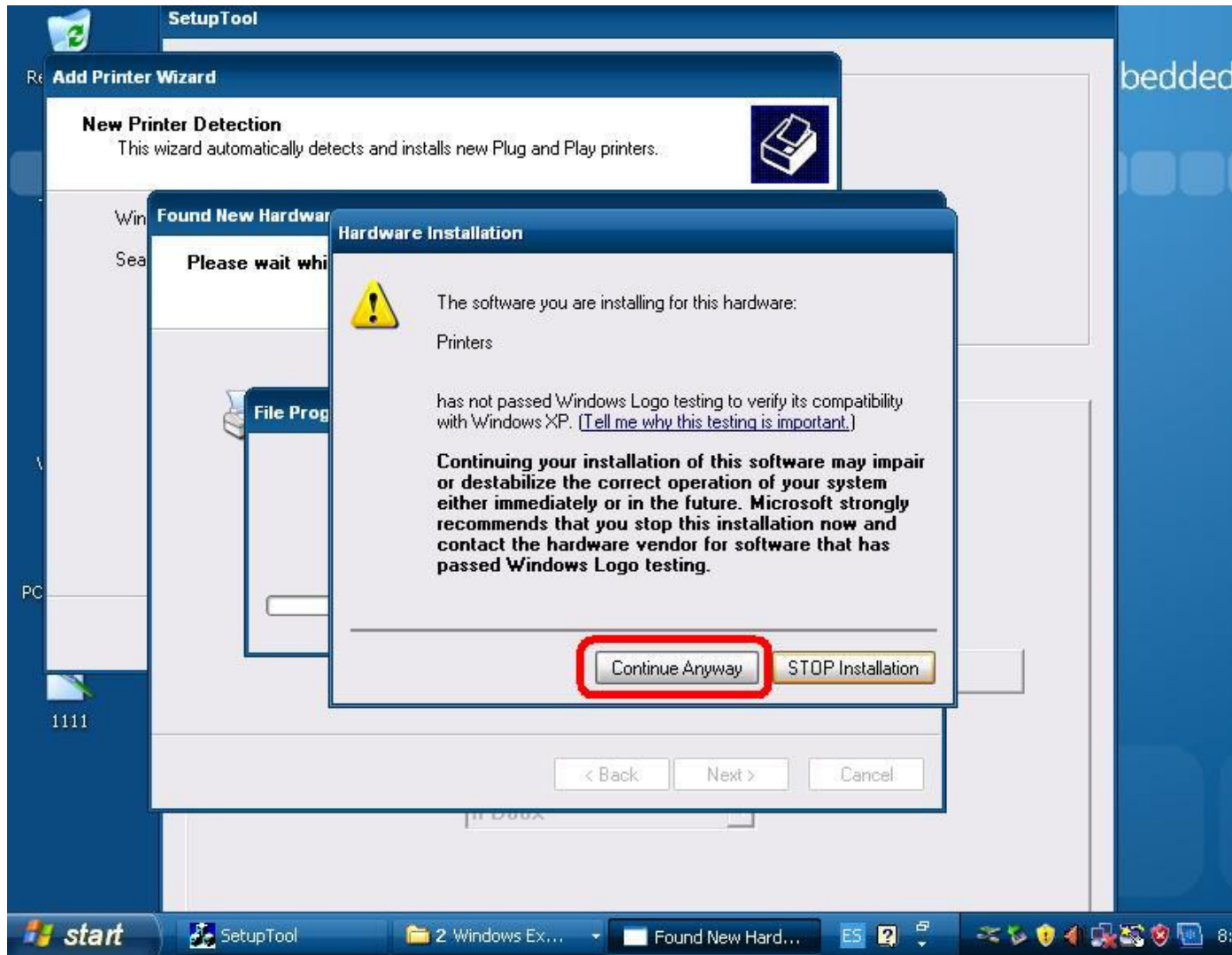
A: Please select Printer size 2inch or 3inch

B: Please click “Next”



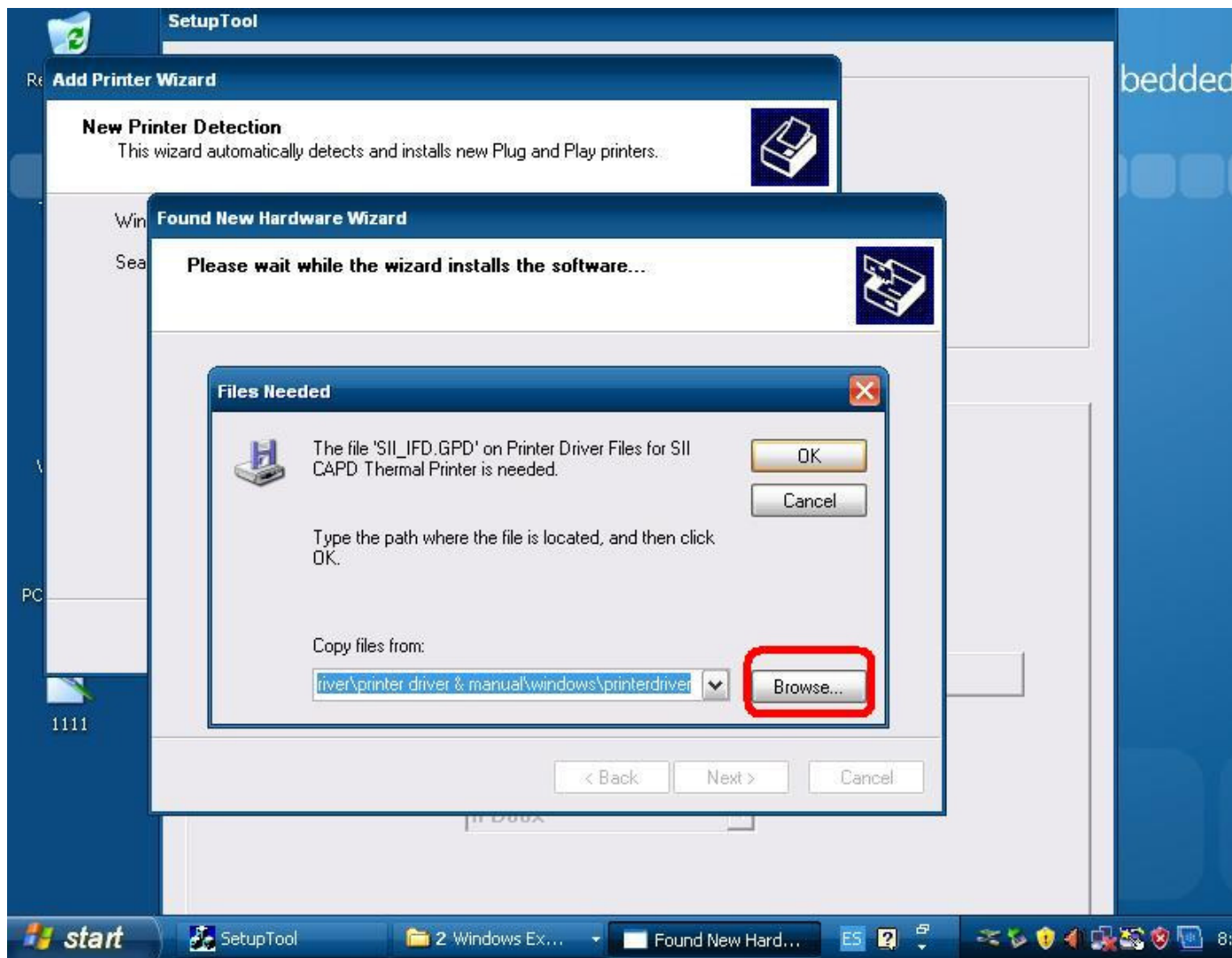
Step10:

Please click "Continue Anyway"



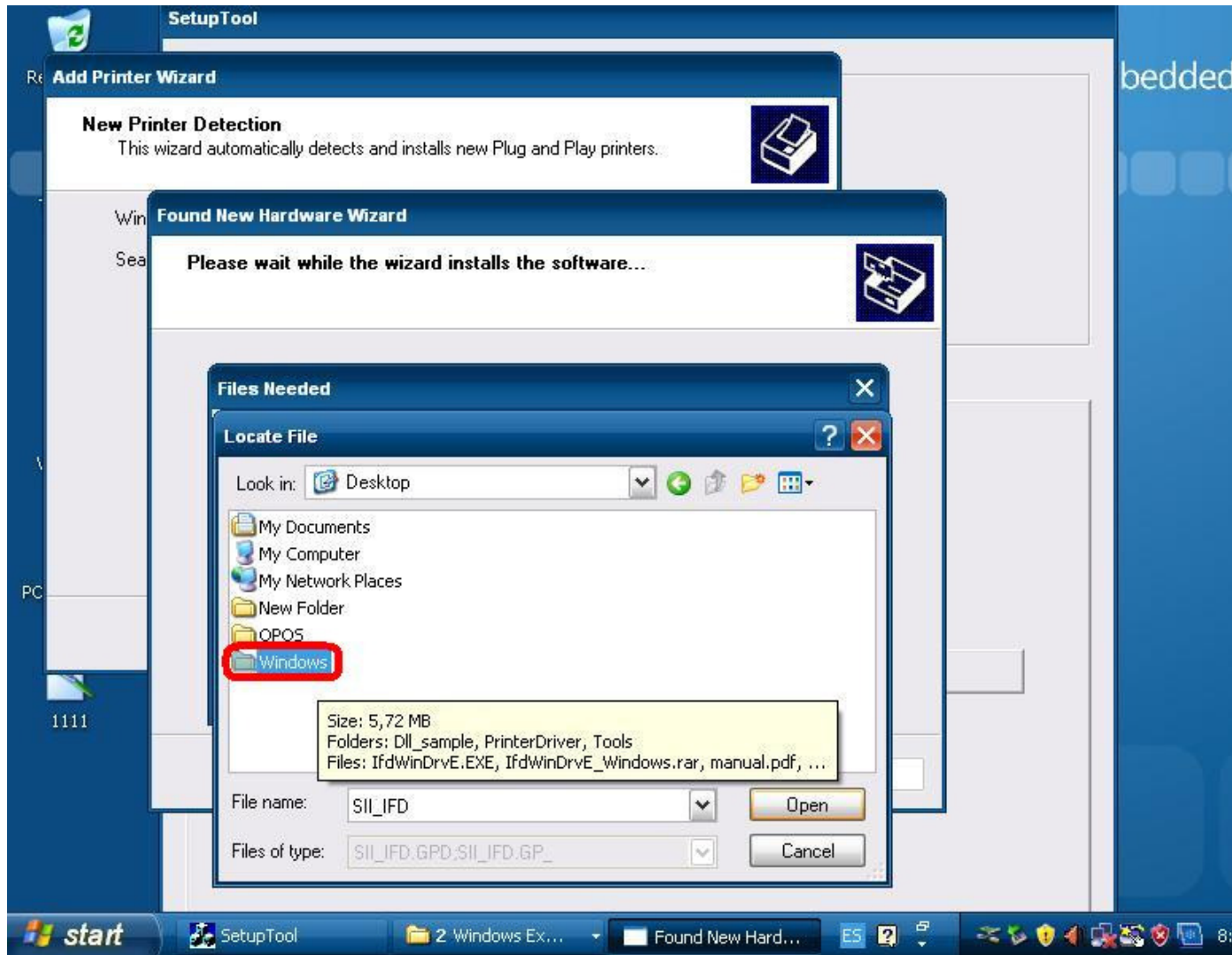
Step11:

Please click “Browse”



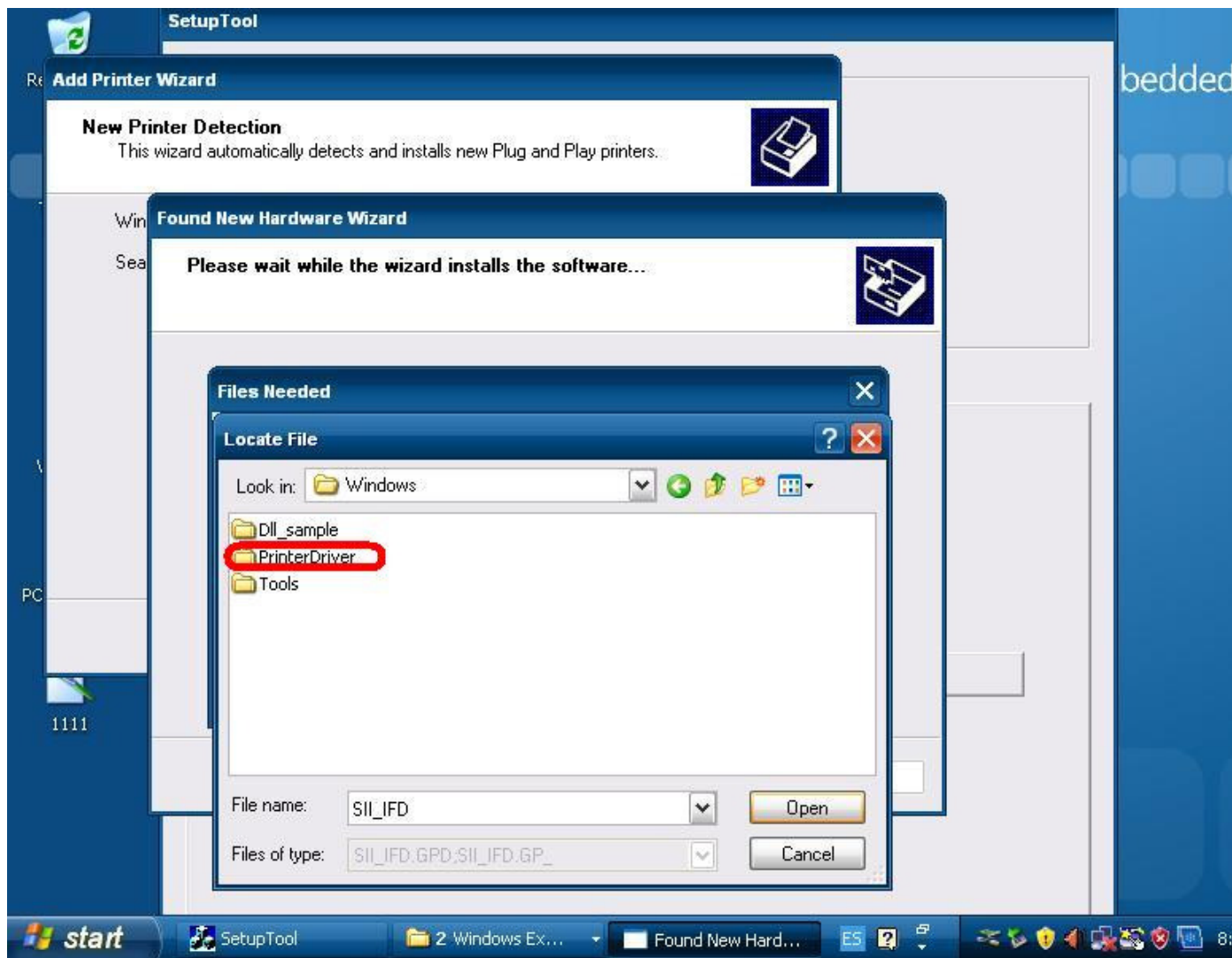
Step12:

Please select Windows folder from Desktop



Step13:

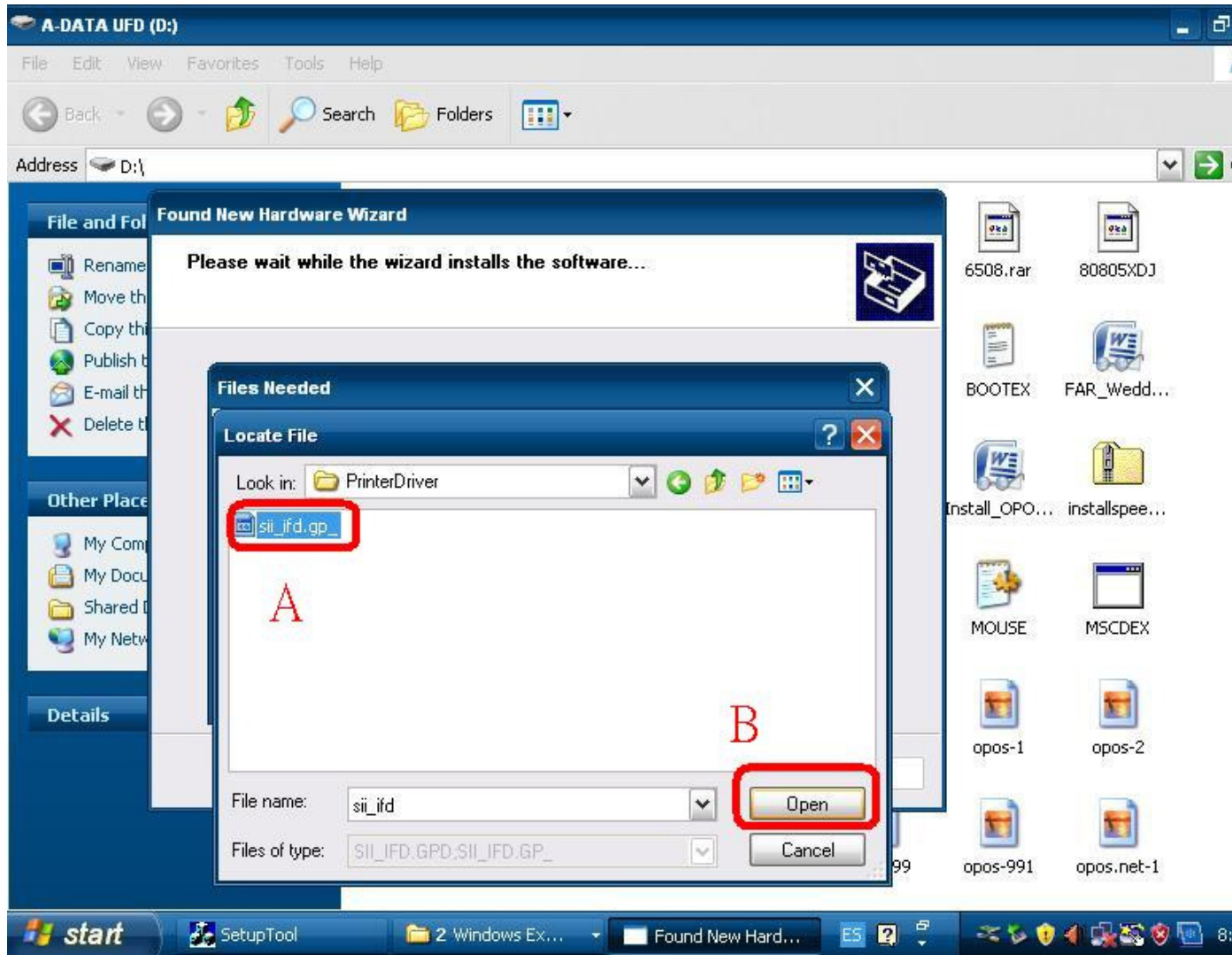
Please click "PrinterDriver"



Step14:

A: Please click “sii\_ifd”

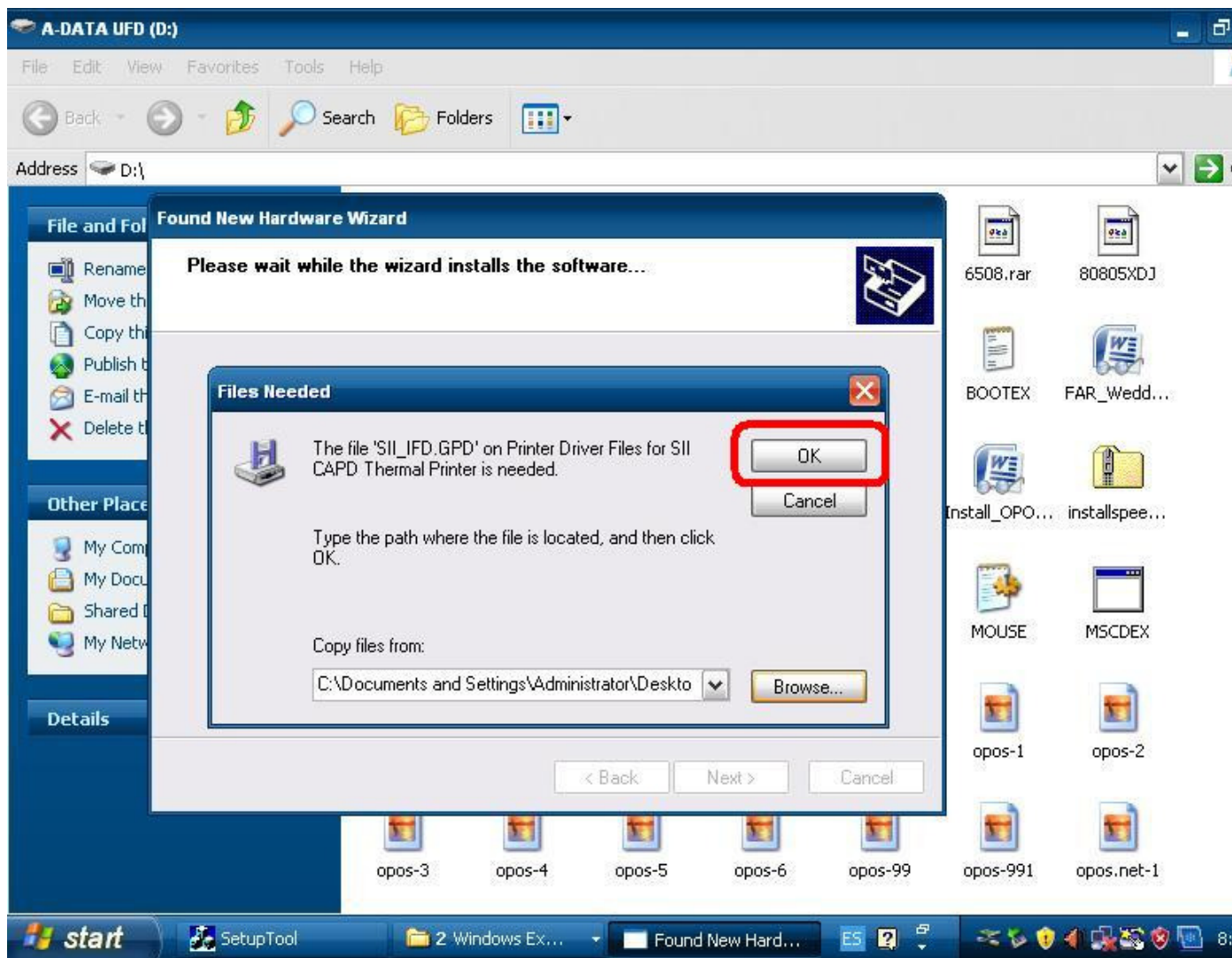
B: Please click “Open”





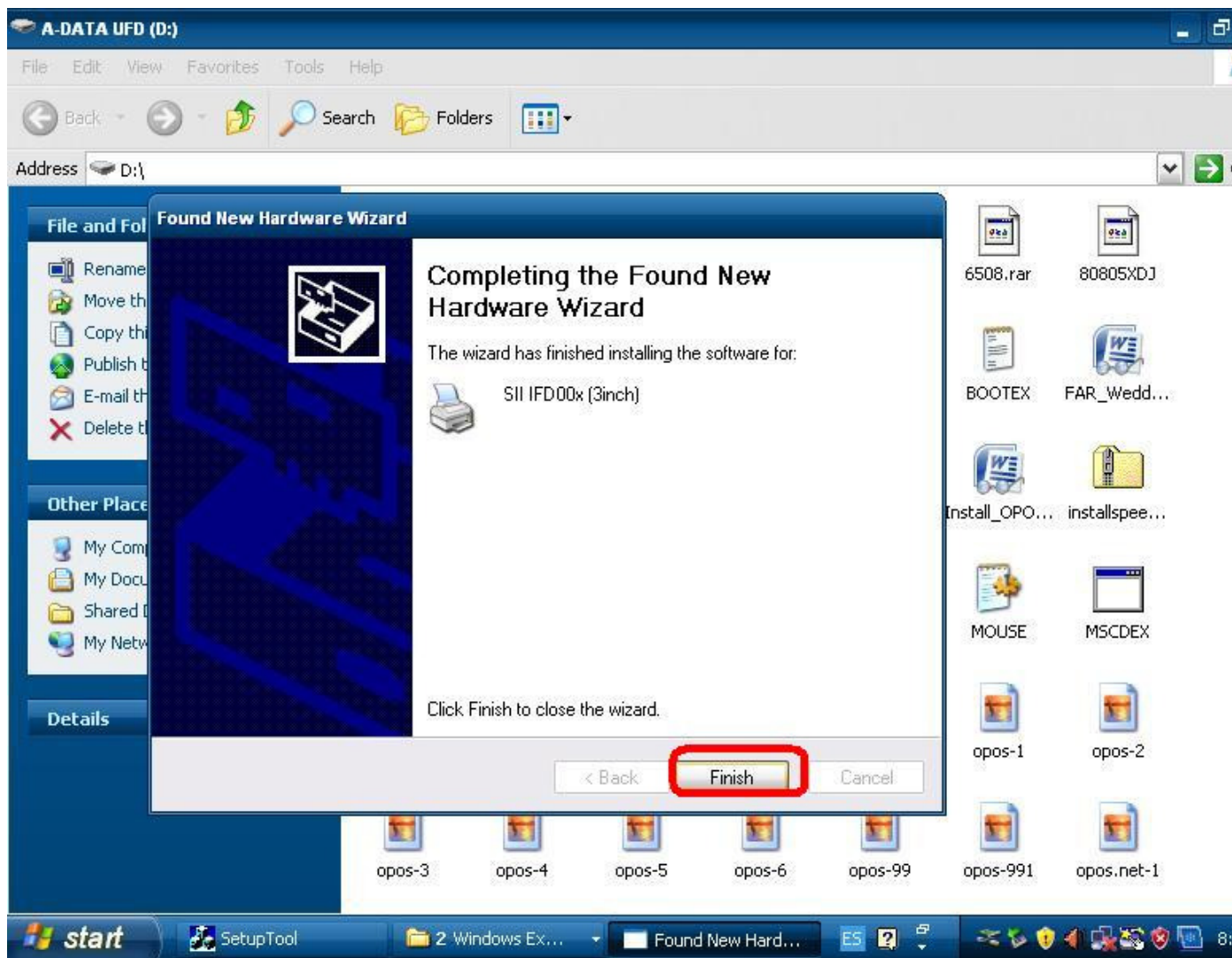
Step15:

Please click "OK"



Step16:

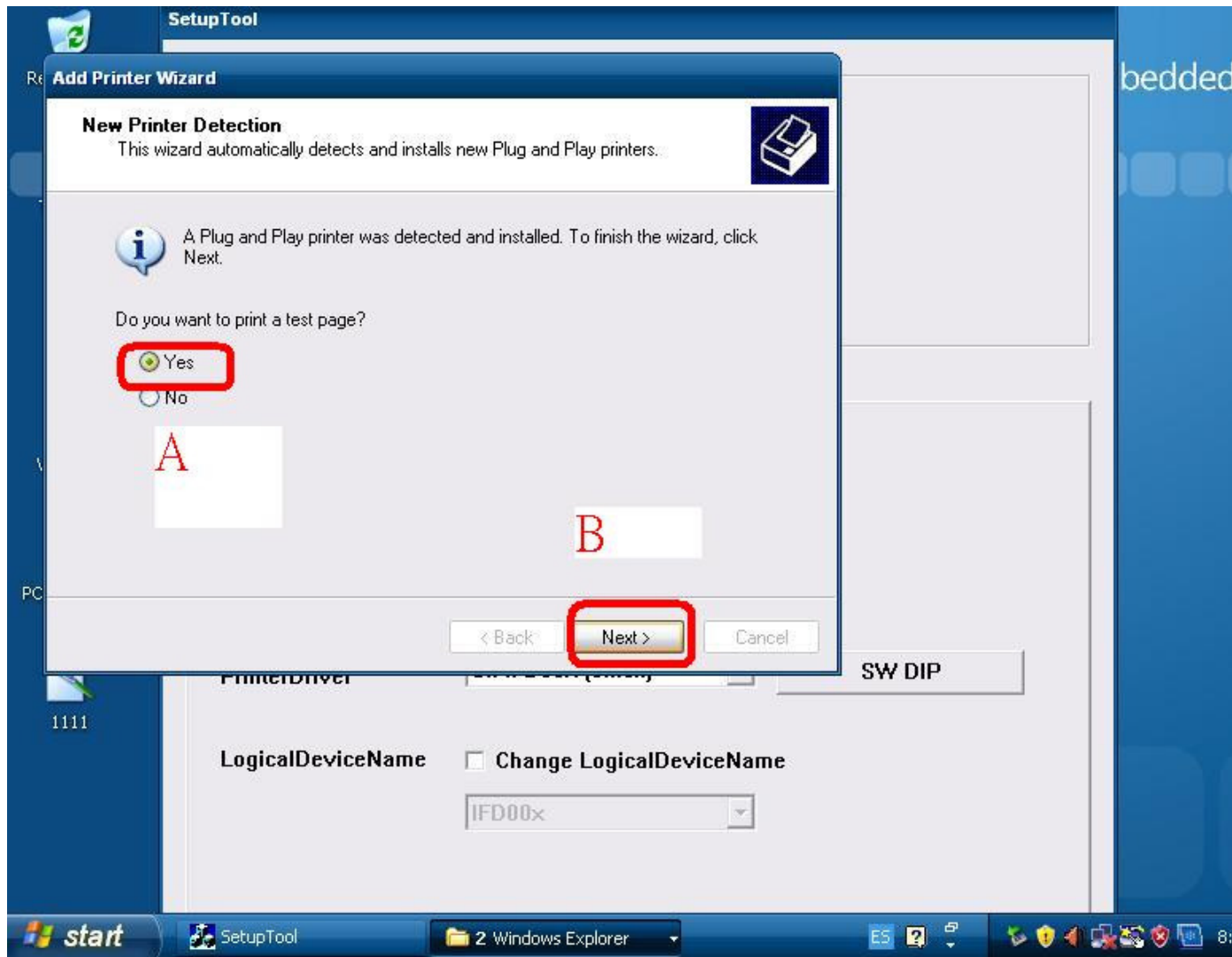
Please click "Finish"



Step17:

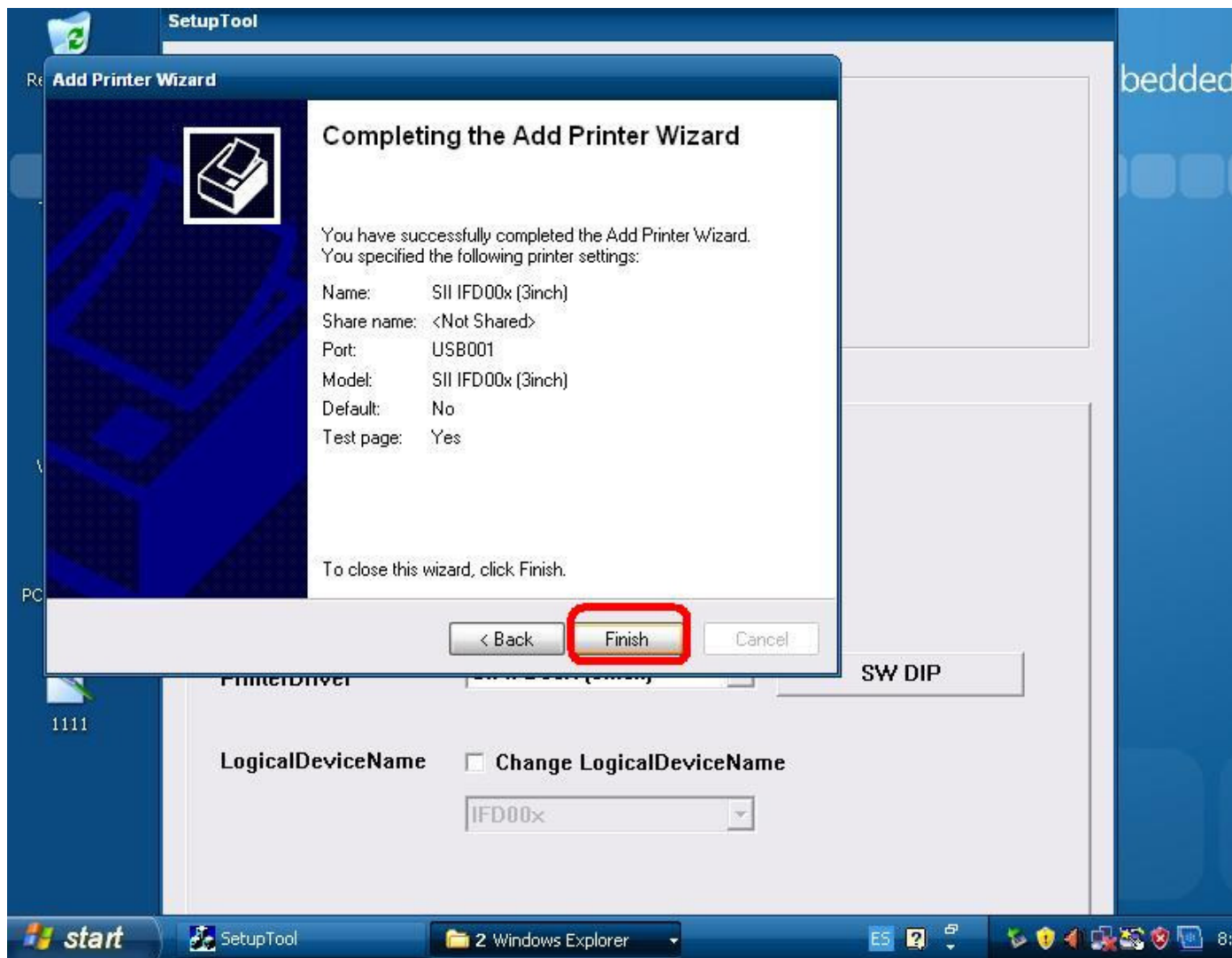
A: Please select “Yes”

B: Please click “Next”



Step18:

Please click "Finish"



Step19:

Please click "OK".

